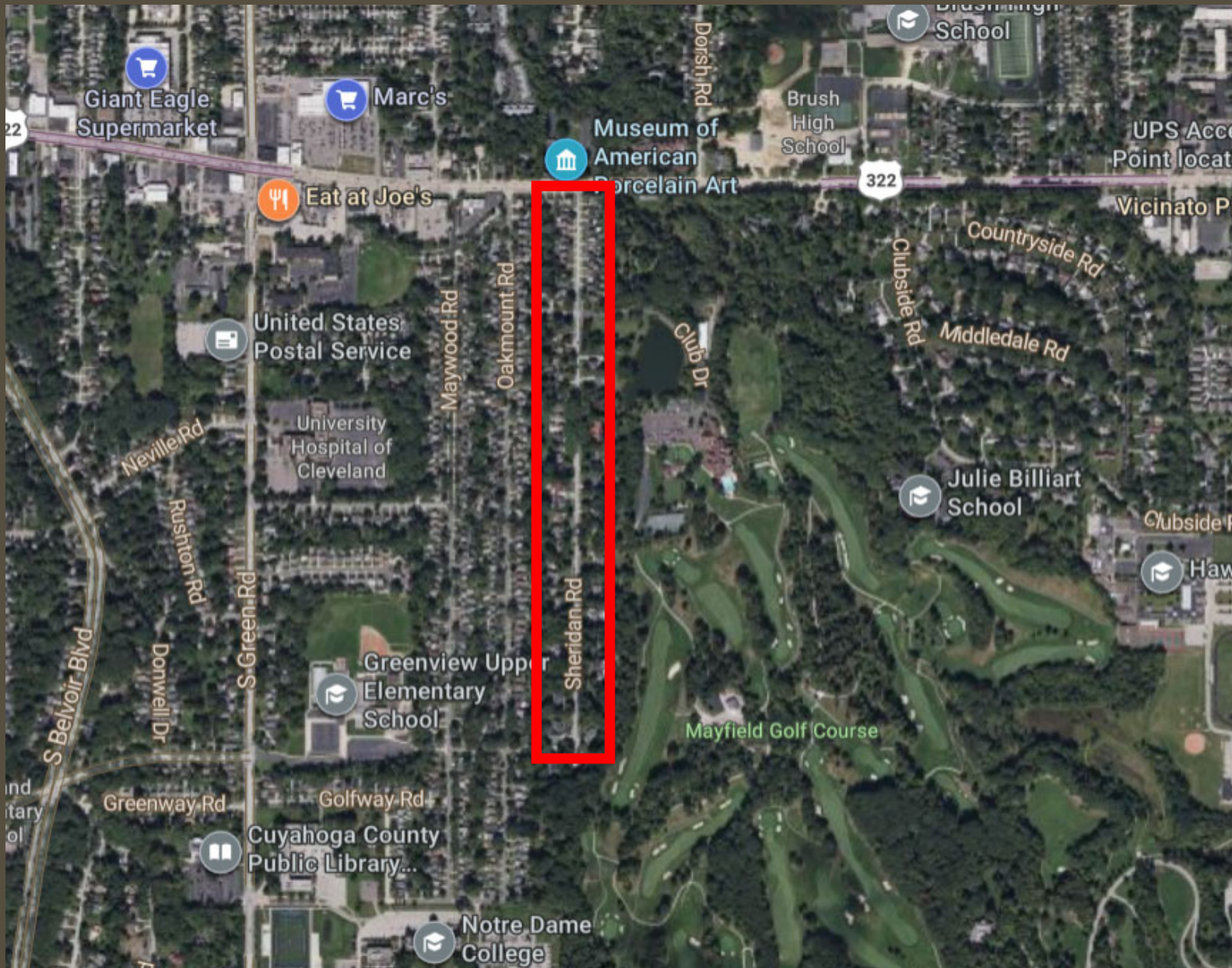


# Sheridan Road

Presentation to South Euclid - Lyndhurst Historical Society  
By Dan Monroe  
June 5<sup>th</sup>, 2024

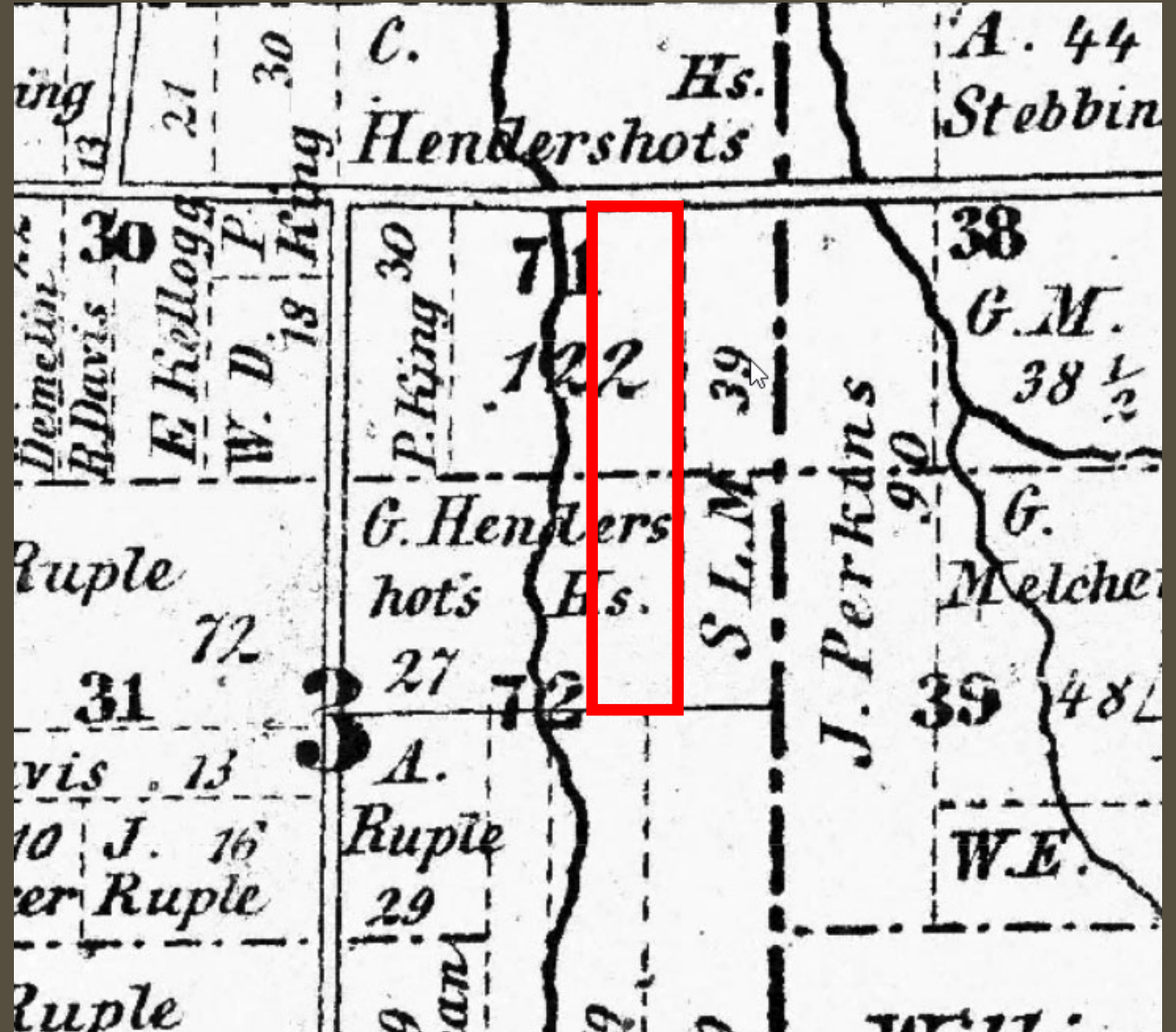




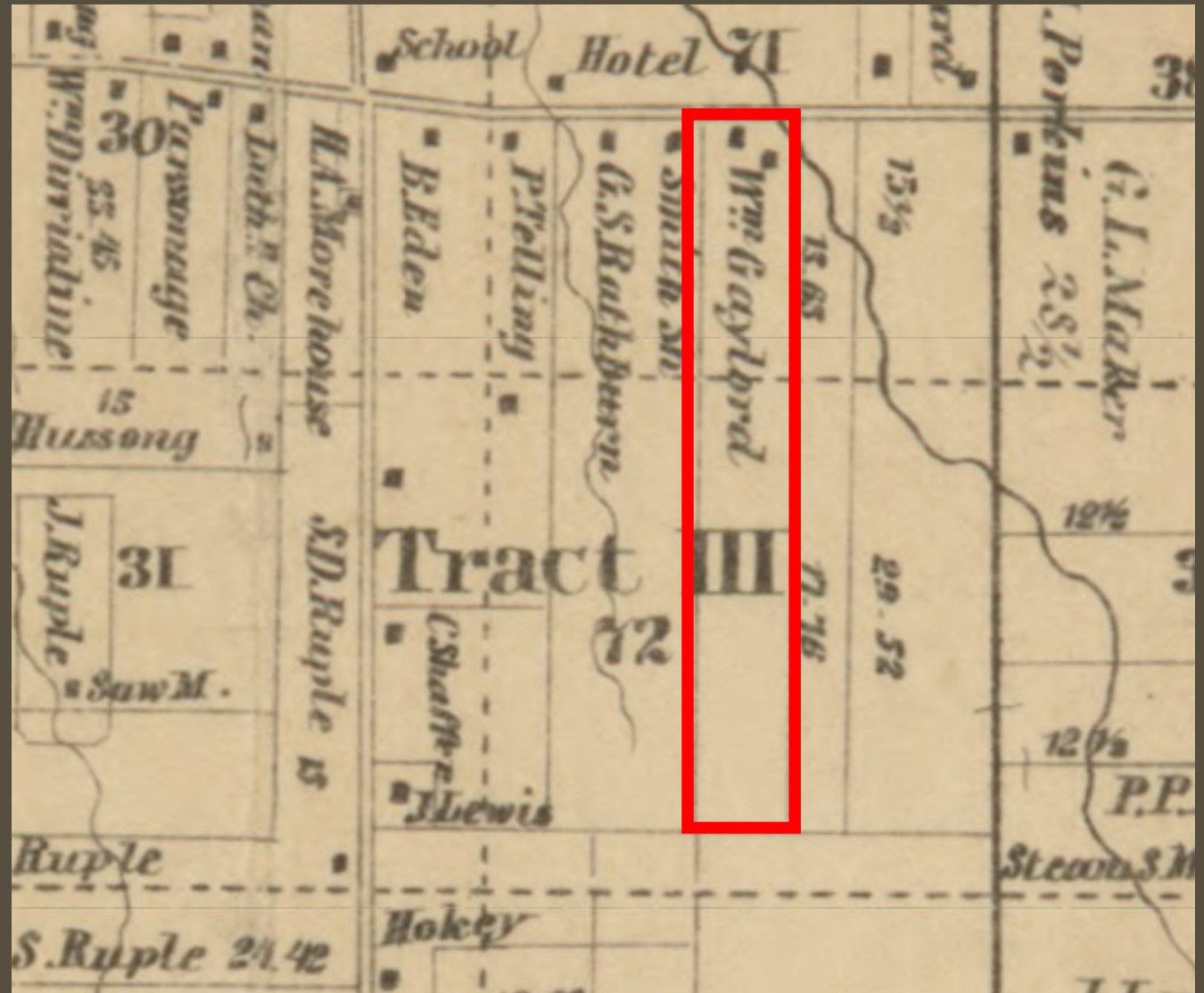
The property that would become Sheridan Road changed hands many times in the 19<sup>th</sup> century

This map from 1852 identifies the property owner as G. Hendershots

“SLM” immediately to the east is industrialist Samuel Mather



By 1858 the property was owned by William Gaylord





In 1871 it was reported that William Bowman purchased the property for \$4,500 (approx. \$105k today)

**Real Estate Transfers.**

**The following sales of real estate have been filed for record since our last report:**

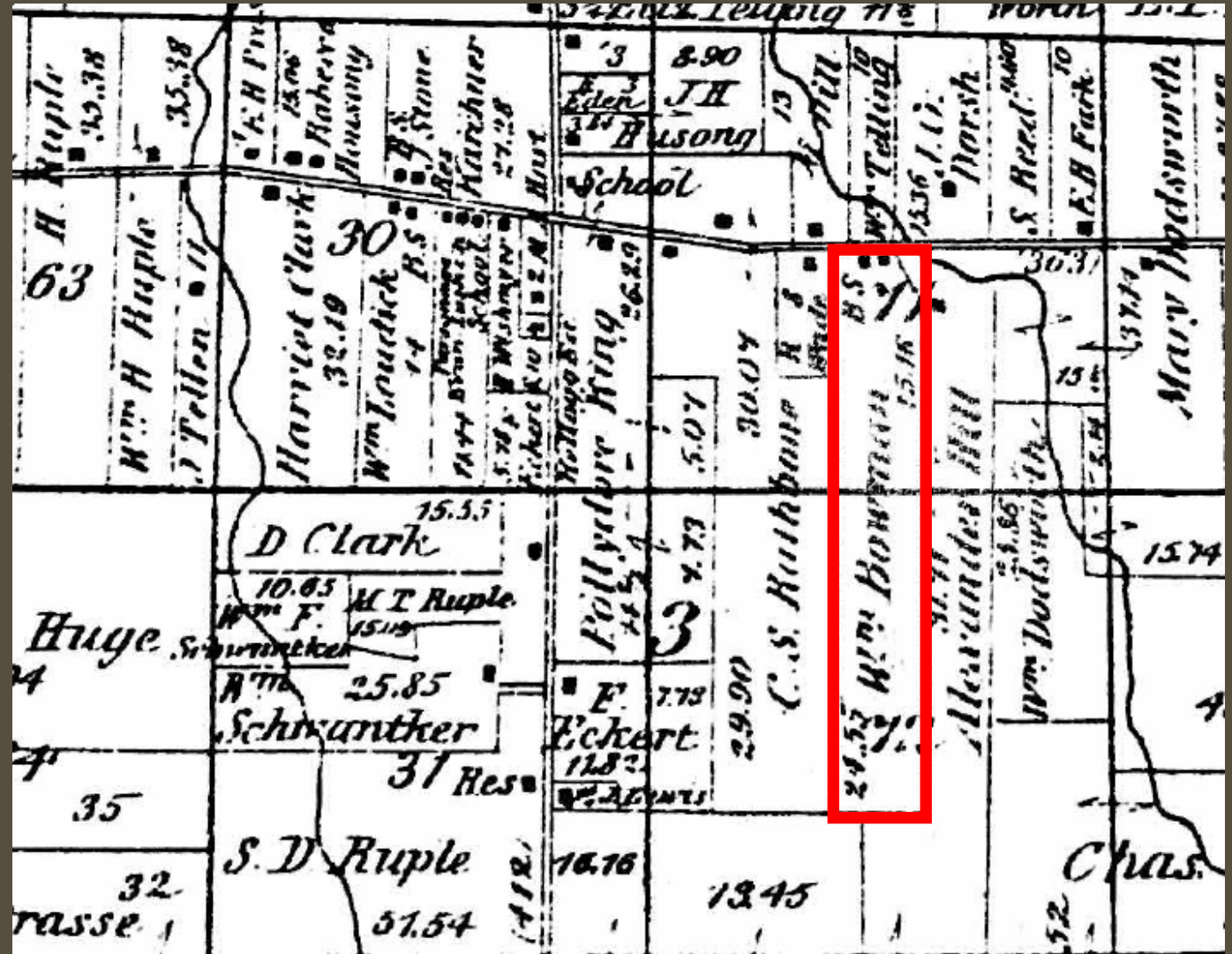
**William Gaylord to William Bowman—Euclid, 37.91 acres; \$4,500.**

Plain Dealer December 19, 1871

This map from 1874 identifies William Bowman as the property owner

By this time the area was still not easily accessible

The Mayfield plank road would not be constructed until 1877, and the C&E Interurban would not open until 1899



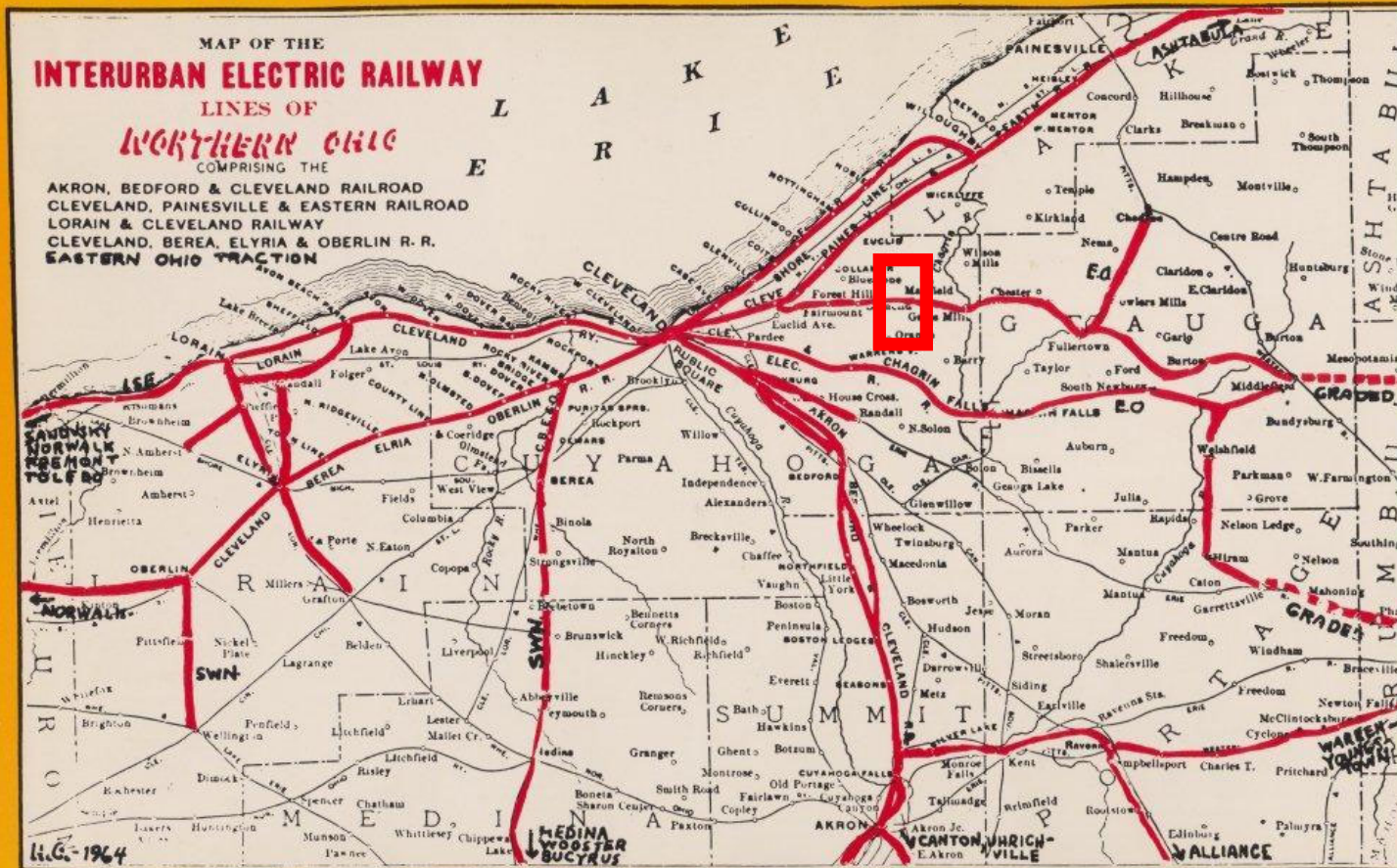
Construction of the Cleveland & Eastern Interurban along Mayfield Rd in 1899 dramatically improved access to the area





Stop 10-A (sometimes known as 10½) was the closest to Bowman's property and was approximately a 45-minute commute to public square

## NORTHERN OHIO'S INTERURBANS



NORTHERN OHIO INTERURBAN NETWORK: This is the great electric interurban system that flourished in the early days of the century. These lines and their connections are featured in this book. This tremendous mileage in electric rapid transit flourished for only a few decades, before it was obliterated by the Auto Age.

The C&E sparked a flurry of real estate investment in the eastern suburbs

Around 1900, businessman Arthur G. Frisbie acquired the Bowman property with plans to divide it into suburban lots



Arthur G. Frisbie

Frisbie was a major real estate investor who specialized in buying rural farmland and reselling it as suburban lots

By 1900, the Frisbie Company controlled more than 7000 acres of land



A. G. FRISBIE  
The Frisbie Company




This ad from 1900 shows how Frisbie marketed his properties

“Beyond Smoke and Grime”

“Good health and clear brains”

“Country residence”

“Excellent transportation facilities”



**Beyond Smoke  
and Grime**

Where you live helps to make you what you are. Plant your home in the rich soil of pure air, beautiful scenery and pleasant surroundings, and you will harvest for yourself and family good health and clear brains.

Over 7000 acres of the most beautiful land for suburban and country residence is now offered for the first time along the Cleveland & Eastern Railway. Secured at farm rates, we can sell you an acre or a hundred acres at prices one-half lower than any similar property can be secured near Cleveland.

A variety of kinds and sizes all beautifully situated—the finest near Cleveland. Hills, Ravines, Valleys, Bluffs fronting a beautiful lake, level pieces for farming. Some with buildings, some without.

The advantages of city and country life bound together by excellent transportation facilities.

Your advantage would suggest prompt action. A postal or 'phone message will bring more information, an illustrated booklet and a free ride to the property if you desire.

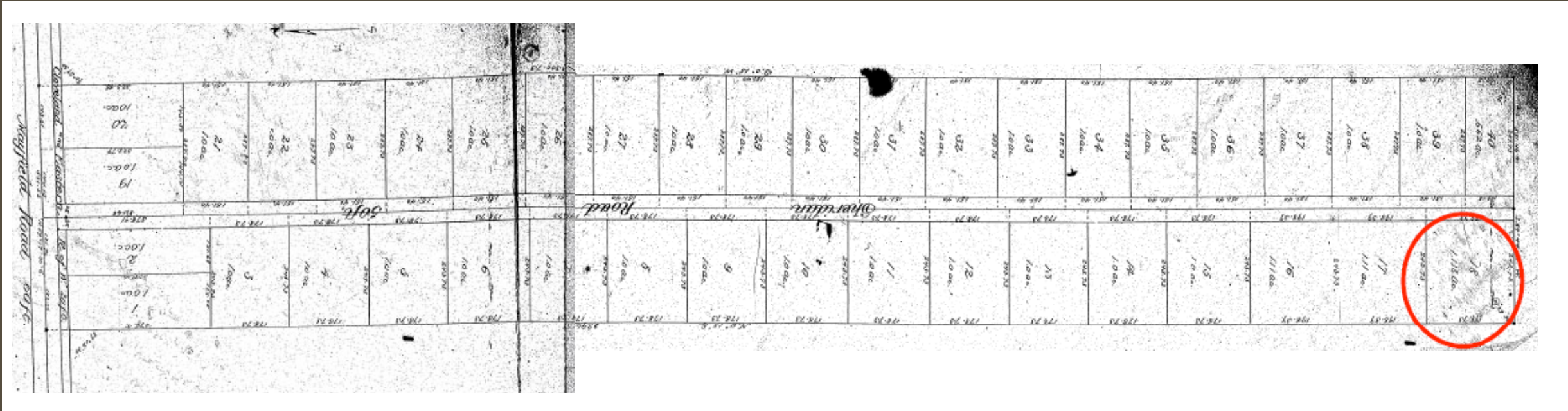
**The Frisbie Realty Co.,**  
915-916 Williamson Bldg., Cleveland, O.  
'Phones: Bell, Main 2671; Cuyahoga, M. 224.

Plain Dealer May 27, 1900

Frisbie divided the Bowman property into 40 lots and did so as evenly as possible



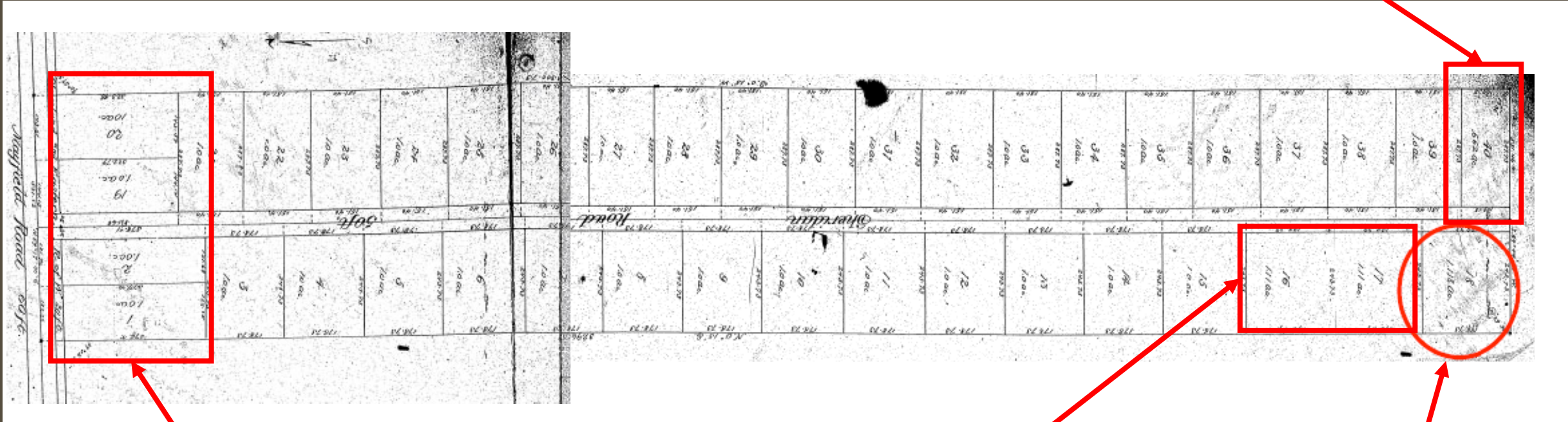
The Frisbie Co's.  
South Euclid Subdivision



1902 Plat Map

Most lots were one acre with a few exceptions...

#40 was the smallest (.662)



#1, #2, #19 & #20 were 1 acre but faced Mayfield Rd

#16 & #17 were slightly larger (1.11)

#18 was the largest (1.18)



The street itself was likely named for Union General Philip Sheridan (1831–1888)

Sheridan was one of the most celebrated heroes of the civil war and was instrumental in the surrender of Confederate General Robert E. Lee

He had a decorated military career that extended into the 1880's



Gen. Philip Sheridan

“South Euclid Acre” was first advertised for sale in the summer of 1902 and was marketed similarly to Frisbie’s other rural properties

Lots were priced at \$350, or about \$12,500 today

## The Frisbie Company's South Euclid Acre Property

Is situated on Cleveland & Eastern car line, 45 minutes' ride from Square and is an investment proposition that it will pay you to investigate. We offer acre lots with a frontage of 178 feet, including graded streets, cinder walks and shade trees at \$350.00—they are located high and level—those fronting on Mayfield Road are 6 feet above the road level.

On the two-acre corner lot there are 35 apple, 25 pear trees, 12 quince bushes and 4 rows of grape vines. Other lots also have fruit and shade trees. Soil is a rich mixed loam—very fertile. These single acres are sold less than you can purchase them in farm tracts in this vicinity. Enquire Acre Dept.

**THE FRISBIE CO.**

Williamson Bldg.

Plain Dealer July 27, 1902

Its unclear why, but it appears the lots did not sell quickly

This ad from 1906 offers a double-lot for sale at a "bargain" price

**FOR SALE AT A BARGAIN.**

**TWO ACRE TRACT ON  
SHERIDAN ROAD, SOUTH  
EUCLID. CLOSE TO ST. CAR  
LINE; PARTLY COVERED  
WITH FRUIT. ELEGANT  
PLACE FOR SUBURBAN  
HOME. ADDRESS BOX 5-J,  
PLAIN DEALER.**

Plain Dealer July 1, 1906



**1587 Sheridan** was constructed in 1900 and, according to county records, was the first and only home on the street in its first decade

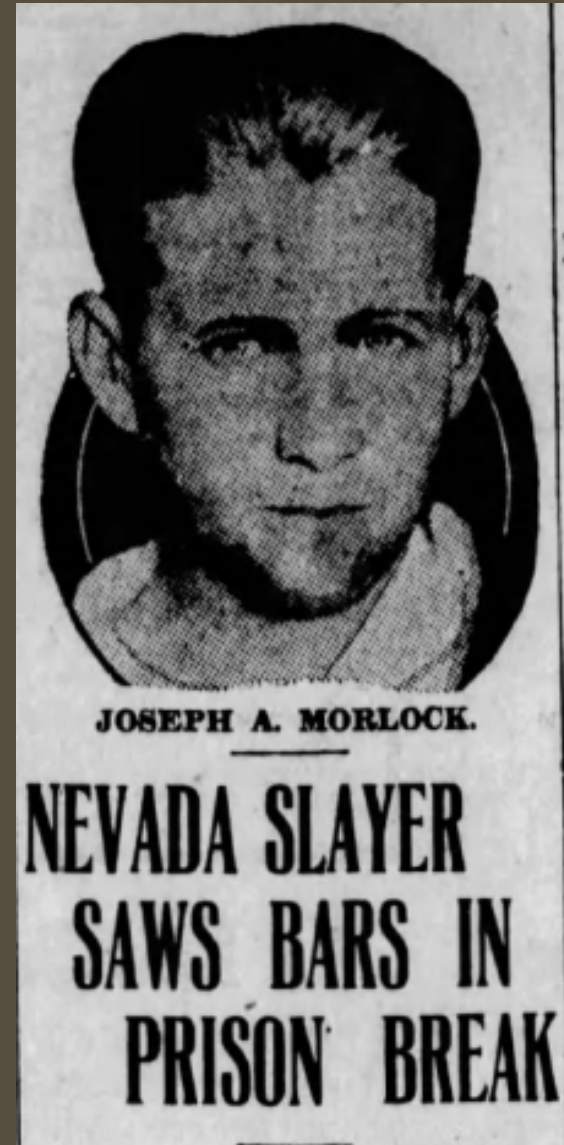
Interestingly, it predates the plat map by several years



Around 1910 the home was occupied by Joseph Morlock Sr., a plumber who would later move out west to prospect gold

Sadly, Morlock Sr. was murdered by his son and an accomplice in a Nevada mining camp in 1930 and fled back to South Euclid, where he was arrested

The story made national news when Morlock Jr sawed through the bars of his jail cell and escaped from prison in 1931



Sacramento Bee July 7, 1931

# **Mayfield Country Club**



Sheridan Road's future would change course in 1909 as construction began on the new Mayfield Country Club

### **Club Buys Land for Golf Course.**

The Mayfield Country club bought eighty-eight acres on Richmond-rd. yesterday for a golf course. One of the finest courses in the city will be laid out by the club. Twenty-eight acres were bought from J. F. Melcner, nineteen acres from Elizabeth Lexso and forty-one acres from Charles E. Malle. The construction of the course will begin immediately.

Plain Dealer July 31, 1909

MCC was born from the old Euclid Club, which dissolved in 1910 and was established by 300 of its former members

## EUCLID CLUB NEAR END OF EXISTENCE

Famous Organization and  
Noted Golf Course Disap-  
pear After This Month.

Members Decide to Dissolve  
Organization and Give  
Up the Land.

The Euclid club will be closed on Oct. 1, its property liquidated as soon thereafter as is possible, and the club will pass out of existence.

The decision to disband the club with the expiration of the ten-year lease on the club grounds and golf course was decided upon some time ago when it became evident that the property had grown too valuable to be longer retained for club purposes. Official action to that end has just been taken, and a famous club and an equally famous golf course will pass out of existence together. The furniture and fixtures and other property owned by the club will be sold.

The Euclid club had a membership of 600, and has been in existence for ten years. The Mayfield Country club, with a membership of 300, all members of the Euclid club, was organized about a year ago, its members having in view the expiration of the lease on the present grounds and the probable dissolution of the Euclid club.

Members of the new Mayfield Country club assert that it is an entirely new organization and not the successor of the Euclid club, although the membership is practically all drawn from the latter. But aside from that, it is stated, the Mayfield club cannot be described as the successor of the Euclid any more than the new Cleveland Athletic club could be called the successor of the old Century club.



This sketch shows the design of the new Mayfield Country Club

THERE'LL BE A DIFFICULT GOLF COURSE  
IN CLEVELAND WHEN NEW CLUB IS OPENED



Clubhouse for Mayfield Country club, designed by Frank B. Meade.

Plain Dealer June 5, 1910



This photo shows the Mayfield Country Club a few weeks before its opening July 1, 1911



Plain Dealer May 14, 1911

The original clubhouse was lost to a fire in 1914 but quickly rebuilt

**WOMEN IN DANGER  
IN MAYFIELD CLUB  
AS BUILDING BURNS**

**Only Black Walls Remain of  
Popular Rendezvous  
of Clevelanders.**

---

**New Structure Will Go Up on  
Same Site, Say  
Officers.**

---

**WATER PIPES CLOGGED**

Plain Dealer March 11, 1914

John D. Rockefeller was an honorary member of Mayfield Country Club and was seen driving on Sheridan August 26, 1913



JOHN D. ROCKEFELLER AND PARTY LEAVING MAYFIELD COUNTRY CLUB.

Plain Dealer August 27, 1913



In 1916, Sheridan property owners paid to have the street paved

It was the first time in the history of the county that a road was paved with private funds

There were only five homes at that time, so Mayfield Country Club likely contributed a large portion of the cost

### **DON'T WANT COUNTY AID.**

For the first time in the history of the county, petitioners for the paving of a county road have offered to pay all the cost themselves, leaving nothing for the county to pay.

Such a proposition was put up to the county commissioners yesterday by property owners along Sheridan road in Euclid township. The road is about a mile long and the cost of paving would be about \$15,000.

All the property owners ask is that the commissioners shall put through the legislation necessary to make the deal a legal one. They were told to return at a future meeting with the written consents of the owners.

1532, built 1915

1534, built 1928

1560, built 1925

1588, built 1911

1596, built 1913

1600, built 1913

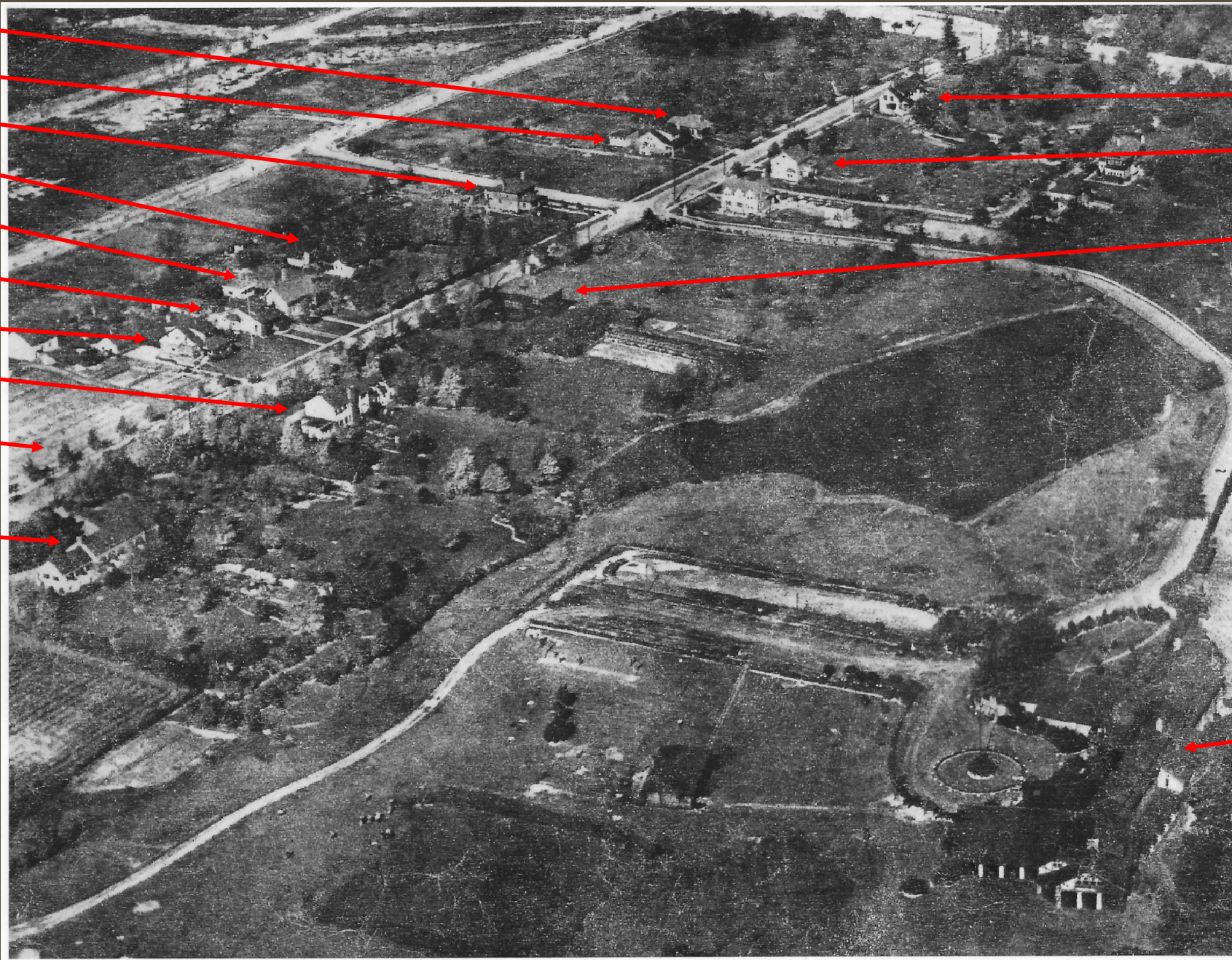
1608, built 1913

1615, built 1920

Oak trees

1621, built 1917

**Sheridan,  
1928**



1523, built 1925

1535, built 1925

1587, built 1900

Mayfield C.C.  
rebuilt 1914



This row of oaks, seen in the 1928 aerial photo, is about 100 years old





Mayfield Road looking west toward Green, 1928

The C&E tracks were removed from Mayfield Road in 1926



# **Notable Residents**

By the 1920s, several prominent Clevelanders began constructing homes on Sheridan



## **1617 Sheridan**, home of Claud Hanscomb Foster

Constructed in 1928 it is the largest occupied residence in South Euclid and is unique for its Mediterranean-style architecture




Foster was a successful inventor,  
industrialist, and philanthropist

He developed the Gabriel Horn, a  
multitone automobile horn powered by  
exhaust gases

WHEN IT SOUNDS AS IF A MISSISSIPPI  
RIVER STEAM BOAT WAS BEARING  
DOWN UPON YOU, THINK OF THE

**GABRIEL**



DEEP  
MELLOW  
TONE

**HORN**

WARNS  
WITHOUT  
SCARING

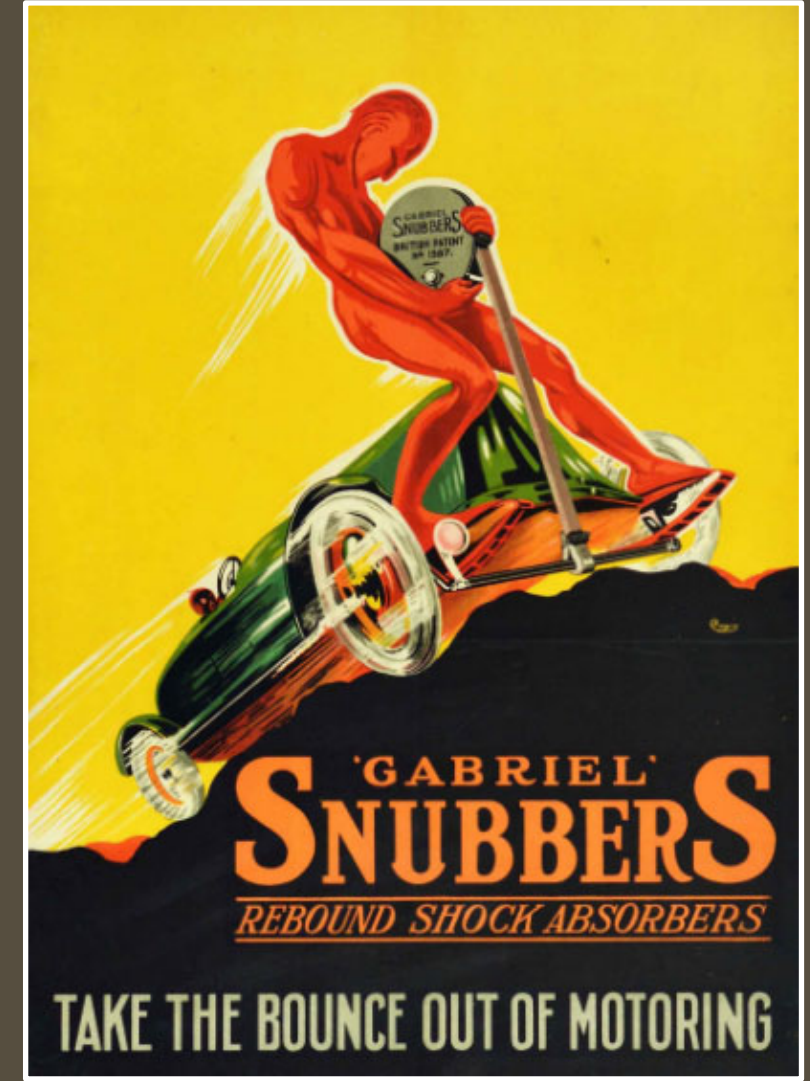


Claud H. Foster



He also patented the "Snubber"  
automotive shock absorber

For a period of time his company sold  
75% of all shock absorbers in the world





Foster became very wealthy and actually paid the highest income tax bill in Ohio in 1924

He sold the Gabriel Co. in 1925 and remained chairman until 1928. He was known as the "Doctor of Car Riding," and was often consulted by car manufacturers

He donated the Foster Engineering Building to Fenn College in 1949

In 1952, he donated bulk of his wealth to various charitable & educational institutions



Claud H. Foster

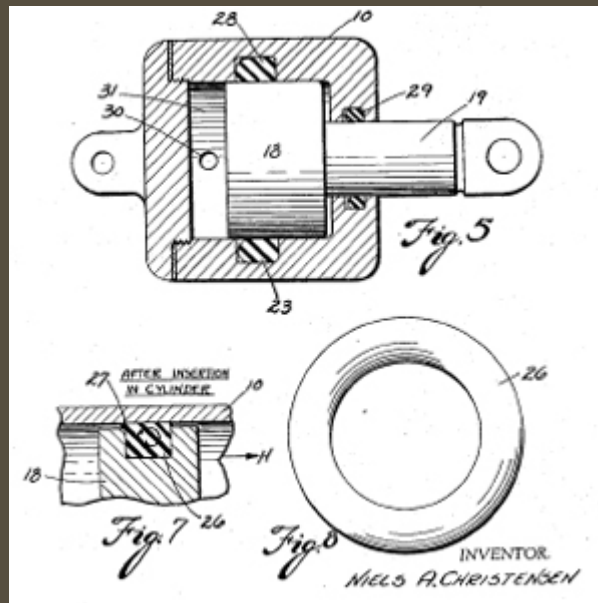
## 1719 Sheridan, home of Niels Christensen



Originally from Denmark, Christensen was a prolific inventor who moved to Cleveland in 1926 to develop automobile & truck brakes for the Midland Steel Products Co

In 1933 he perfected and patented the o-ring which became a critical component of hydraulic engineering

The o-ring made seals simpler, cheaper, and more reliable and are found in thousands of applications to this day



Niels A. Christensen



# 1703 Sheridan, home of Roger Egeberg

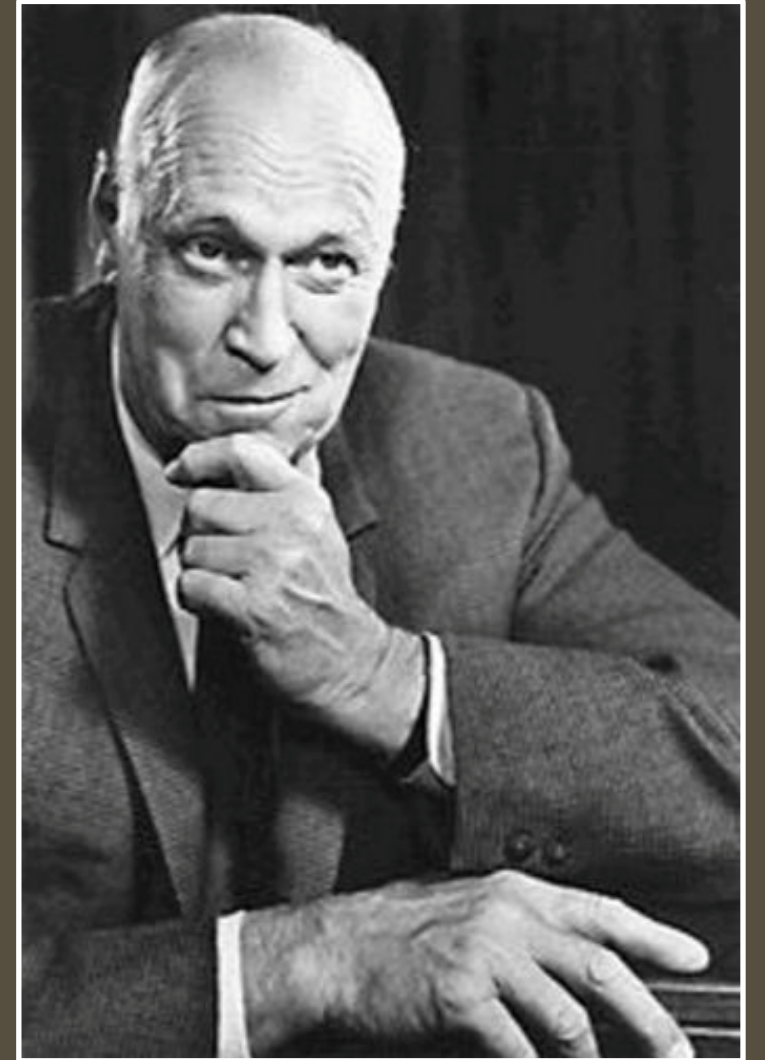


Egeberg, originally from Chicago, taught at Western Reserve University & opened a private medical practice in Cleveland

He became well known as Gen. Douglas MacArthur's personal doctor during WWII, and affectionately as "Americas Family Doctor"

After the war he moved to California to lead the VA hospital in Los Angeles and teach at UCLA & USC

He later served in the Nixon administration as the Assistant Secretary for Health and Scientific Affairs



Roger O. Egeberg



**1712 Sheridan**, home of Benjamin P. Bole Jr





Bole was a biologist and professor at Case Western Reserve University

He was a master ornithologist and often led bird walks throughout Cleveland

He was the only son of the prominent Benjamin Bole Sr. & Roberta Holden Bole

Bole Sr. served in WWI and owned the Plain Dealer Publishing Co

Roberta Holden established the Holden Arboretum and was a generous benefactor of many local institutions



Benjamin P. Bole Jr.

**1763 Sheridan**, home of Richard Preston Nash and Helen Millikin Nash  
Constructed in 1923, it is unique for its English-Tudor architecture



Helen Millikin Nash was an influential philanthropist and environmentalist

When the Shaker Lakes were threatened in the mid-1960s by the proposed Clark Freeway, Nash anonymously contributed half the cost of a National Audubon Society Study which concluded that the Lakes area should be preserved

This led to the creation of the Shaker Regional Nature Center in 1966 of which she was an original trustee



Helen Millikin Nash



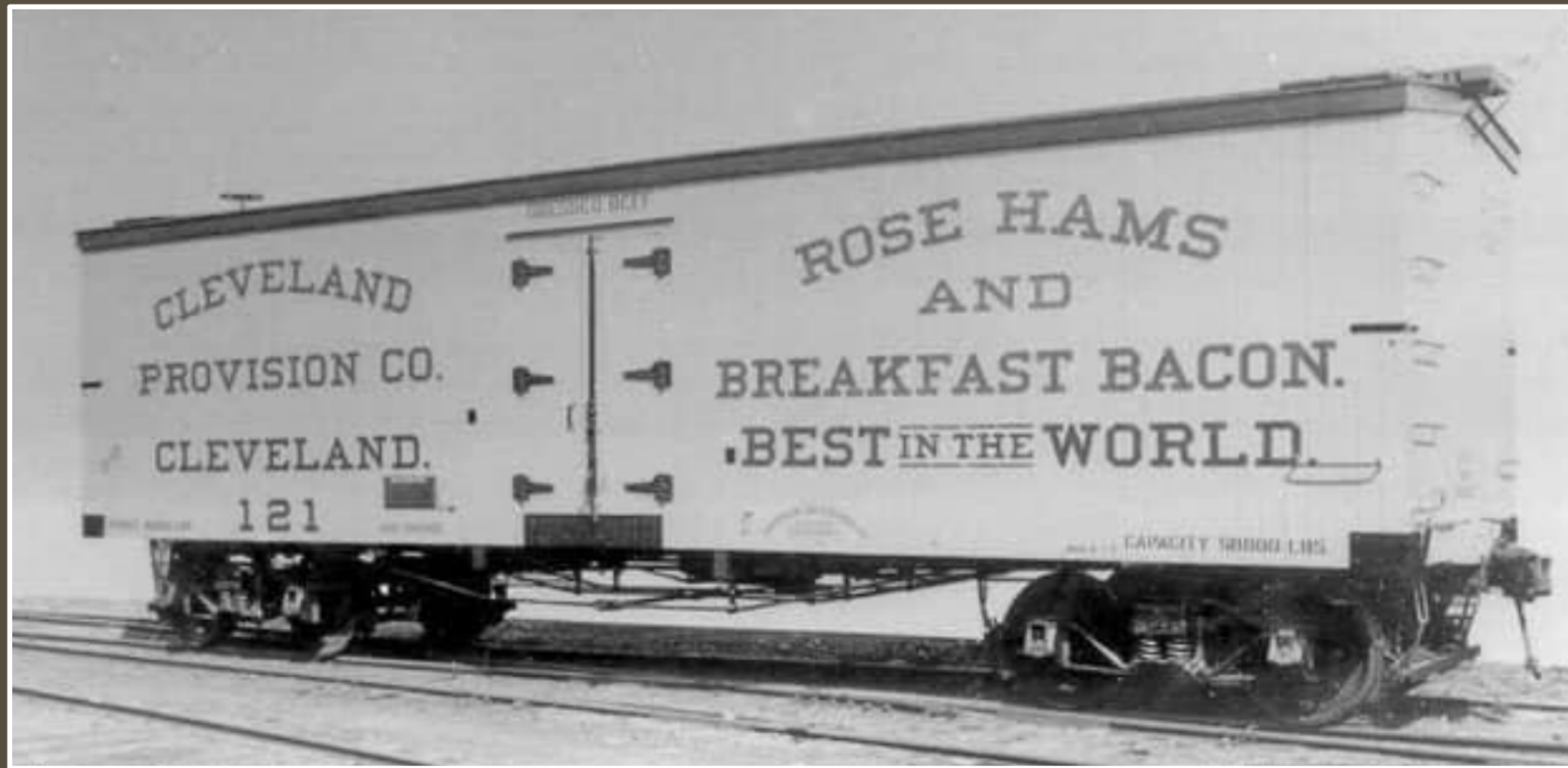
## 1691 Sheridan, home of Thomas Hawkes Nash

Constructed in 1923, it is unique for its flat roof and stucco exterior



The Nash family lead the Cleveland Provision Co. which was at one time the largest independent packinghouse in Ohio

Thomas served in World War I and was coincidentally stationed at Camp Sheridan



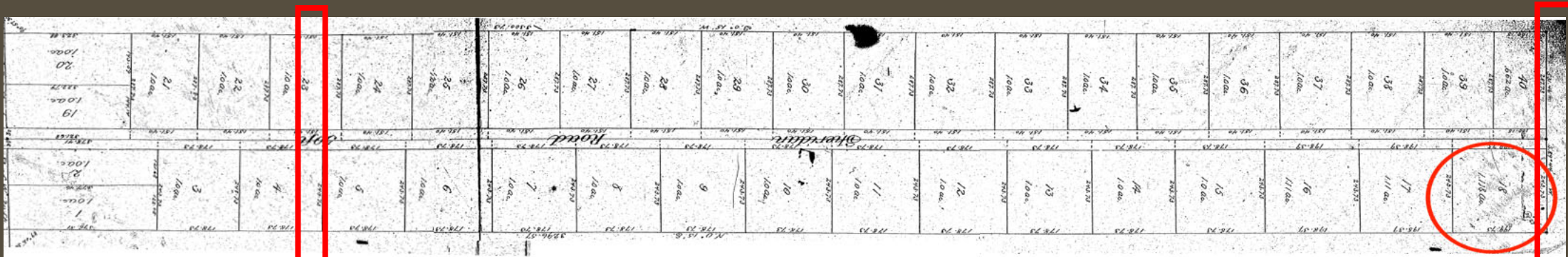
# **Sheridan Today**



Today, Sheridan Road looks very different than it did in 1902. Many lots have been split, consolidated, & added...

1902

40 original lots



2024

64 homes today



Club drive

Two properties added

Sheridan Road currently has 12 century homes

By 2030, 38 of the street's homes (more than half) will be 100 years old

The street was designated a city landmark on April 2<sup>nd</sup>, 2024



1800 Sheridan, built in 1923

**Thank You**